

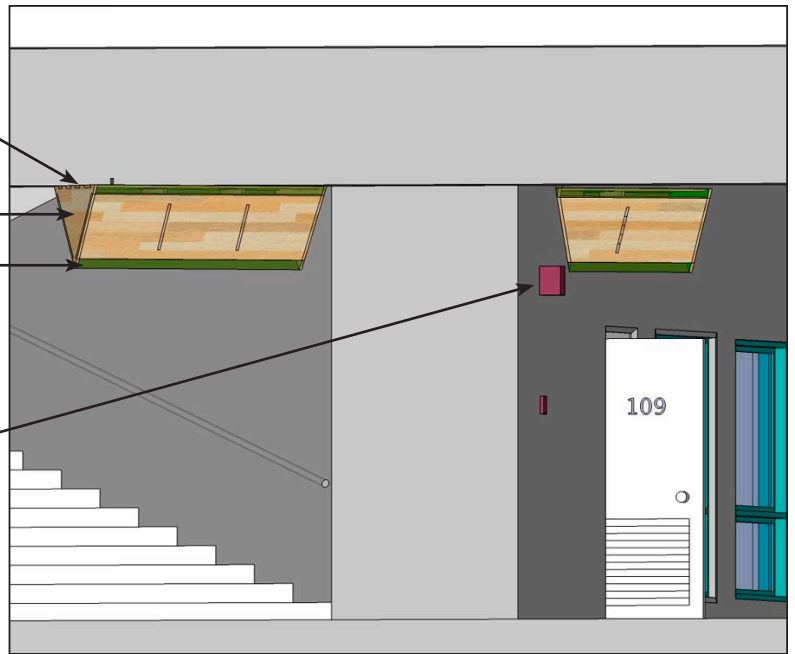
f/stop

Sign Design

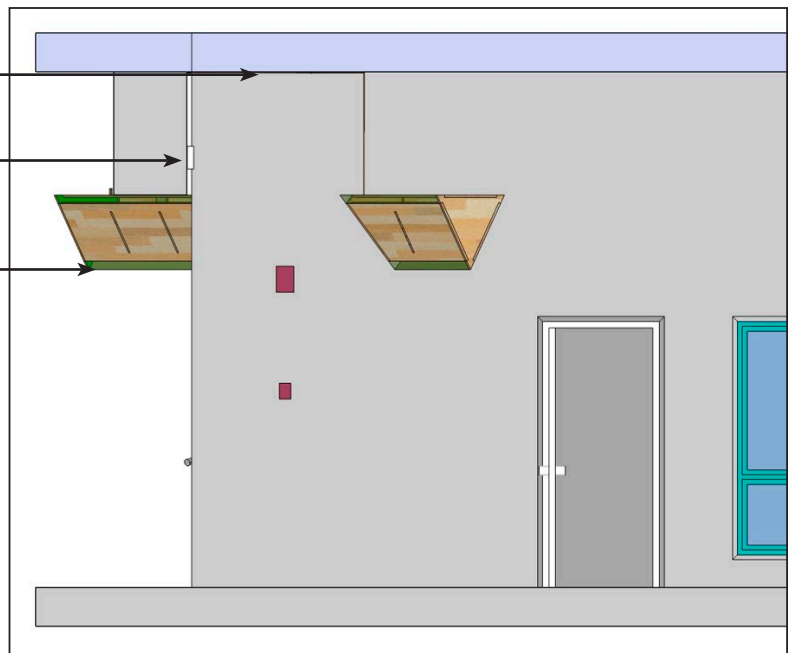
Architect's
scale piercing
concrete walls

Iconic shape
with glowing
edges

- Sign attached flush to bottom of concrete beam.
- Sign enclosure constructed from 3/4" pre-finished plywood
- Acrylic edges. Removeable to service lamp.
- Inside surfaces of wood enclosure painted green same as casework
- Fire alarm light, to remain visible from both sides.



- Receptacle located in ceiling. Switch location unknown. Allows for simple plug-in fixture.
- "EXIT" sign remains visible at center of hall.
- One internal fluorescent tube in each "half"
- High enough to avoid being an attraction for hanging from. Secure enough to suspend sign + 1 student body.
- Visible from Stair Court.



- Photo-electric eye, if necessary, for night illumination only.

